



SALES • SERVICE • PARTS • ACCESSORIES • UPGRADES

888-795-2278

CRICKETMINIGOLFCARTS.COM

**LITHIUM BATTERIES COME
STRAIGHT OUT OF THE BOX**

**FULLY CHARGE CART
PRIOR TO USE**

**CHARGER WILL READ GREEN
WHEN FULLY CHARGED**

ATTENTION

DUE TO THE NATURE OF LITHIUM BATTERIES: YOUR BATTERY METER WILL READ AN IMPROPER READING. WHEN YOUR BATTERY METER LOSES ONE BAR ON THE READER YOU WILL ONLY HAVE 2-3 MILES TO GET BACK HOME.

LITHIUM BATTERIES WILL READ A CONSISTANT VOLTAGE WITH MINOR DEVIATION.

SOC 100%=40.38V
SOC 90%=40.11V
SOC 80%=40.05V

SOC 70%=39.99V
SOC 60%=39.84V
SOC 50%=39.69V

SOC 40%=39.66V
SOC 30%=39.63V
SOC 20%=39.18V

SOC 10%=38.55V

State of Charge(SOC) VS Voltage(V)

CRICKET MINI GOLF CARTS, INC.
506 FENTRESS BLVD, SUITE A | DAYTONA BEACH, FL | 32114



SALES • SERVICE • PARTS • ACCESSORIES • UPGRADES

888-795-2278

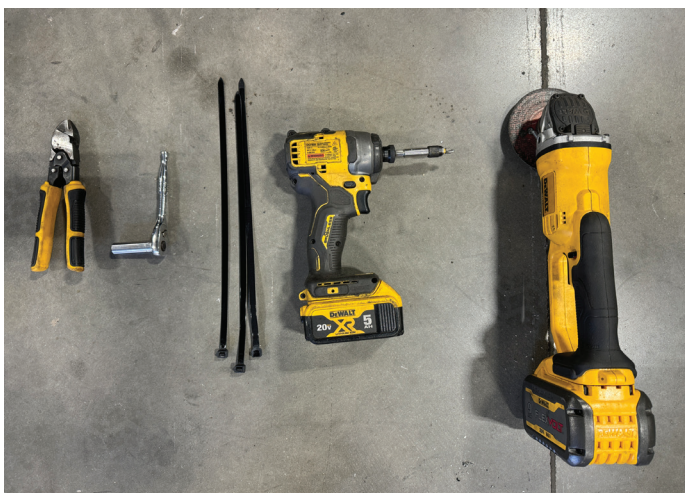
CRICKETMINIGOLFCARTS.COM

WIRE: USE OLD EXISTING JUMPER WIRE FOR 1 to 2 CONNECTION,
USE LONG JUMPER WIRE FOR 2 to 3 CONNECTION

CHARGER: NEGATIVE WIRE TO (BATTERY 1) NEGATIVE POST
POSITIVE WIRE TO (BATTERY 3) POSITIVE POST

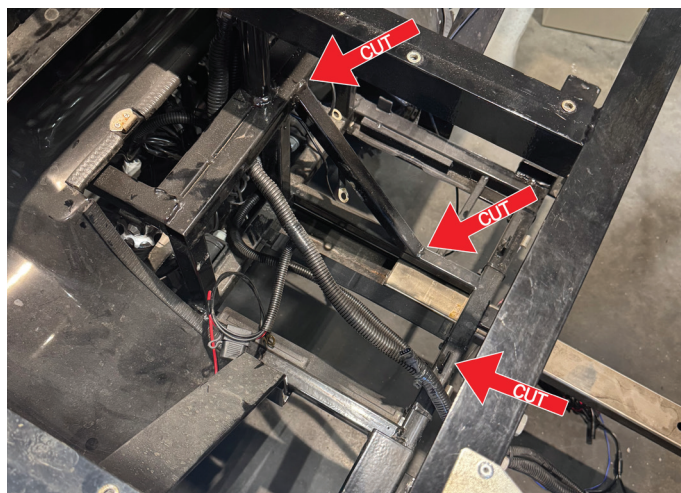
ATTN: DISCONNECT ALL BATTERY CONNECTIONS

TOOLS NECESSARY



1. Unscrew Charger Pan
2. Unscrew Controller Sealed Pan
3. Remove all Battery & Charger Connections
4. Remove Charger Pan from Cart
5. Tie Back Controller Pan to Back Seat
6. Cut all Zip Ties on Wiring Harness located on the Center Seat Frame Post.
7. Cut All Zip Ties on Center Slide System

FRAME REMOVAL



1. Cut the Center Brace Out
2. Cut the Passenger Side Battery Tab
3. Place New Lithium Batteries in place with battery diagram. (you will have small space behind rear battery from wiring harness)
4. Run Wire harness on top of batteries between passenger side and drivers side
5. Zip tie center slide first.
6. Zip tie all power cords back to center seat post.
7. Reinstall battery case carefully.

ATTENTION

DUE TO THE NATURE OF LITHIUM BATTERIES: YOUR BATTERY METER WILL READ AN IMPROPER READING. WHEN YOUR BATTERY METER LOSES ONE BAR ON THE READER YOU WILL ONLY HAVE 2-3 MILES TO GET BACK HOME.

LITHIUM BATTERIES WILL READ A CONSISTANT VOLTAGE WITH MINOR DEVIATION.

SOC 100%=40.38V
SOC 90%=40.11V
SOC 80%=40.05V

SOC 70%=39.99V
SOC 60%=39.84V
SOC 50%=39.69V

SOC 40%=39.66V
SOC 30%=39.63V
SOC 20%=39.18V

SOC 10%=38.55V

State of Charge(SOC) VS Voltage(V)

CRICKET MINI GOLF CARTS, INC.
506 FENTRESS BLVD, SUITE R | DAYTONA BEACH, FL | 32114



SALES • SERVICE • PARTS • ACCESSORIES • UPGRADES

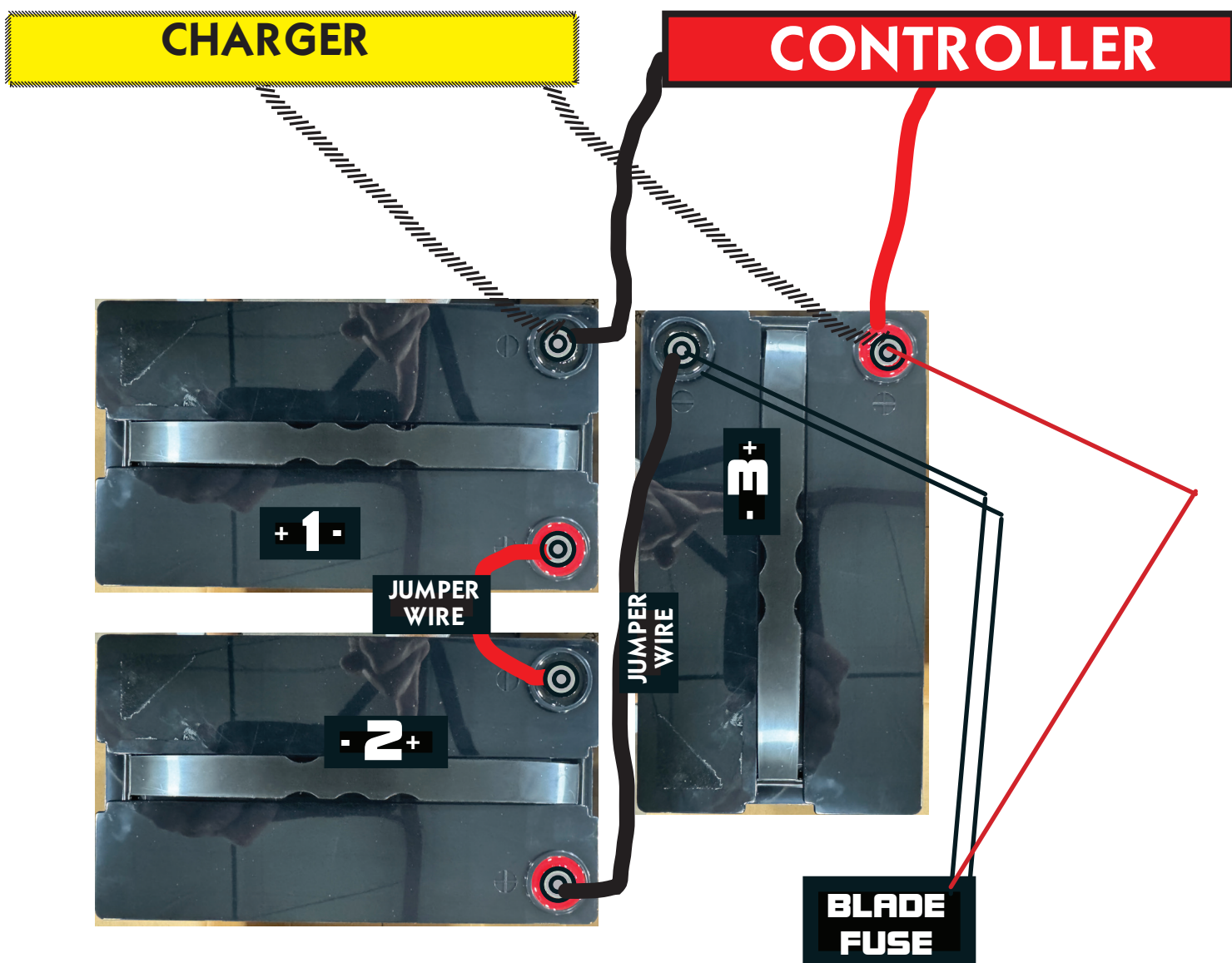
888-795-2278

CRICKETMINIGOLFCARTS.COM

WIRE: USE OLD EXISTING JUMPER WIRE FOR 1 to 2 CONNECTION,
USE LONG JUMPER WIRE FOR 2 to 3 CONNECTION

CHARGER: NEGATIVE WIRE TO (BATTERY 1) NEGATIVE POST
POSITIVE WIRE TO (BATTERY 3) POSITIVE POST

ATTN: ATTACH RED POWER WIRE TO CONTROLLER LAST



WARNING: DO NOT CHARGE BELOW 0°C/32°F | DO NOT DISCHARGE BELOW -20°C/-4°F



LITHIUM BATTERY

SPEC SHEET

LiFePO₄

LITHIUM IRON PHOSPHATE BATTERY
MODEL: ECO.CRICK-36VSEER
RATED CAPACITY: 50AH
RATED VOLTAGE: 12.8V
VOLTAGE RANGE: 10V - 14.6V
MAX CONTINUOUS CHARGE: 50A
MAX CONTINUOUS DISCHARGE: 75A
CHARGING VOLTAGE: MAX 18AMP
WEIGHT: 12LBS

PLEASE STORE CART WITH A
FULL CHARGE

PLEASE DO NOT LEAVE ON
CHARGER
FULL CHARGE: 4-5 HOURS

IT IS RECOMMENDED TO
CHARGER EVERY 2 MONTHS

