

Remote Control

Installation Instructions and Wiring Diagram for ESV (24V)



Cricket Remote Control Installation

Remote Control Operation

1. Set the Remote Control Enable Switch to "ON". Located under the Front seat near the Freewheel Electronic Switch.
2. Check the Key Switch and make sure it is in the "OFF" position.
3. Set the Forward / Reverse Switch on the Dash to "Forward"
4. Using the Remote press "C" to turn the Cart "ON". You will see the battery meter light come on.
5. Using the Remote press "D" to select Forward or Reverse. When Reverse is active you will hear the Cart beep. Press "D" again to place the Cart in Forward. The Reverse beeper will turn off.
6. Using the Remote press "B" to engage the pre-set throttle and move the Cart. Stop pressing "B" to stop the Cart's movement.
7. Once you are done loading or unloading the cart press "C" to turn off the Remote Control system.
8. Set the Remote Control Enable Switch to "OFF".



Cricket Remote Control Installation



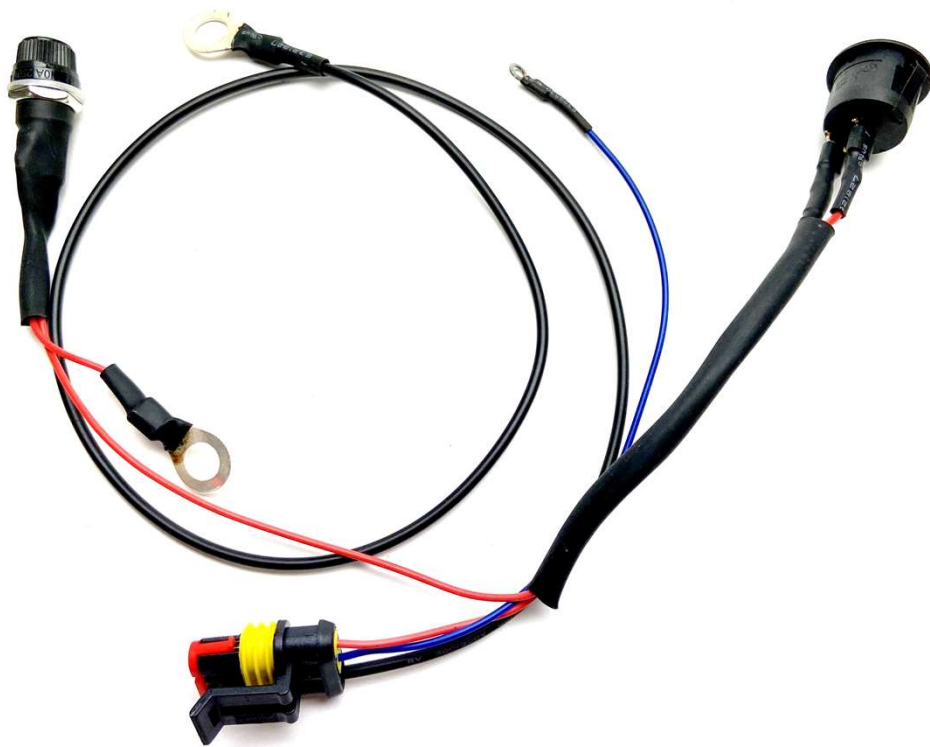
Remote Control Kit



Remote Control Radio and Remote



Cricket Remote Control Installation



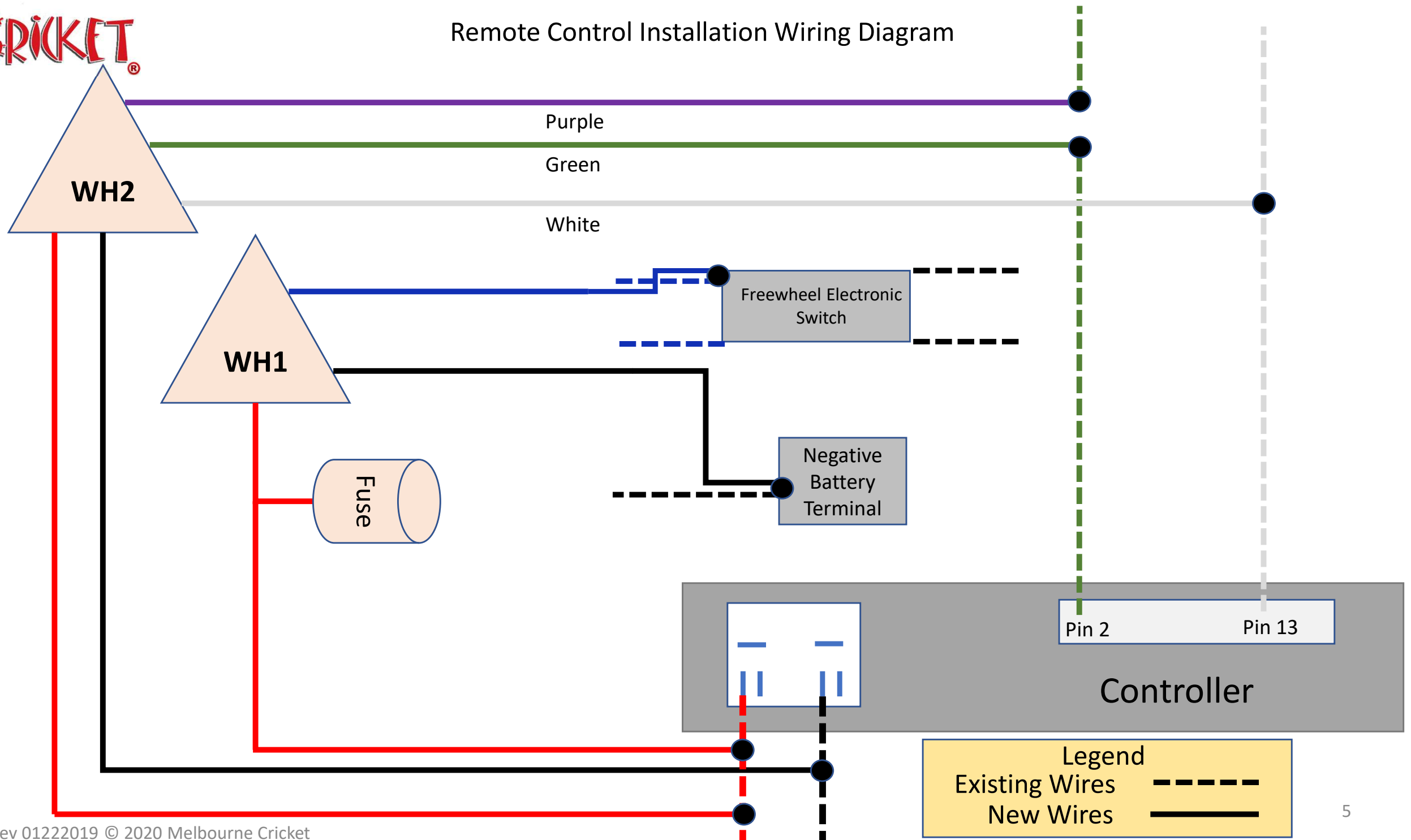
Wire Harness #1 (WH1)



Wire Harness #2 (WH2)



Remote Control Installation Wiring Diagram

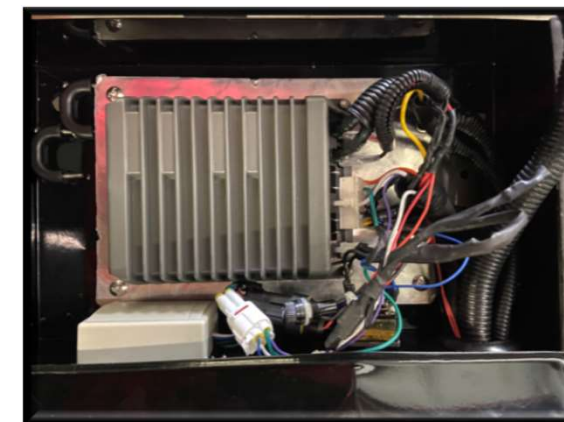




Cricket Remote Control Installation

1. Remove the Controller Tray Cover.
2. Using wire cutters carefully cut the lug off the Red cable on WH1. Make sure your cut is as close to the lug as possible.
3. Strip the wire insulation off the end of the wire you cut to lug off to reveal at least $\frac{1}{4}$ of exposed wire.
4. Inside the Controller Tray Remove the U-Shaped brackets holding the wire harnesses in place. Then remove the four Motor Power Supply cables directly above the 16 pin White connector on the Controller.
5. At the Controller locate the Red and Black cables shown in the diagram and disconnect them from the Controller.
6. Connect the Blue cable from WH1 to the Freewheel Electronic Switch as shown in the diagram.
7. Route the Black cable with a lug from the WH1 and connect it to the Negative Battery Terminal on the driver's side battery.

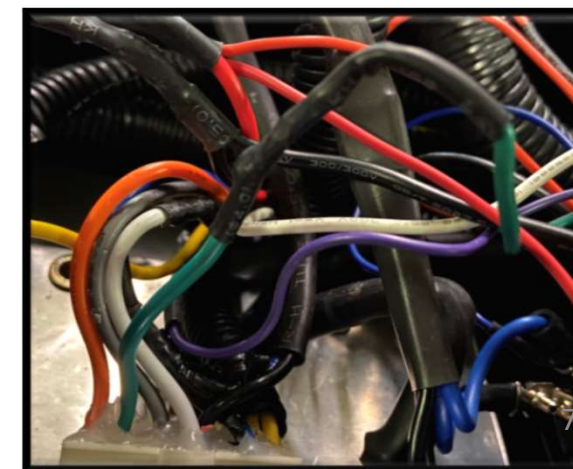
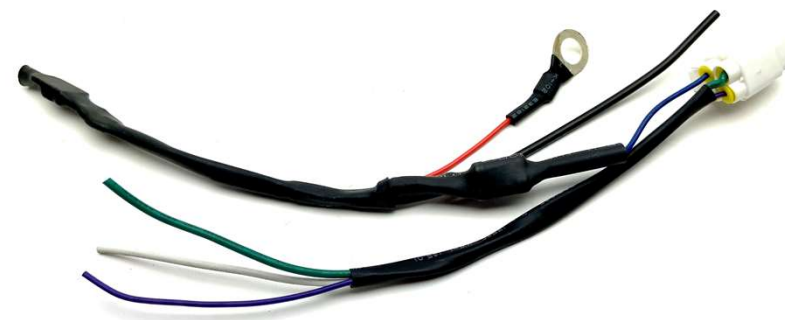
CAUTION: Be careful using a wrench on the battery terminal not to touch the other exposed terminals. Serious damage to the golf cart or personal injury could result in shorting the battery terminals.





Cricket Remote Control Installation

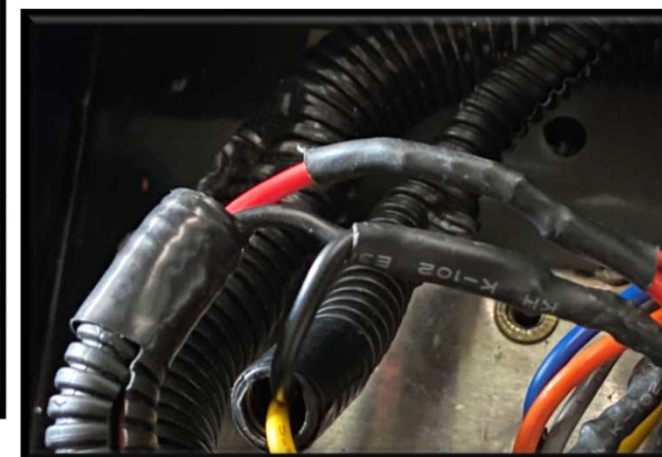
8. Using wire cutters carefully cut the lug off the Red cable on WH2. Make sure your cut is as close to the lug as possible.
9. Strip the wire insulation off the end of the wire you cut to lug off to reveal at least $\frac{1}{4}$ of exposed wire.
10. At the Controller locate the Green and White cables on the 16 Pin white connector on the Controller. See Diagram for pin callout.
11. Using wire cutters cut the Green cable approximately 3.5 inches from the white connector. You will splice cables from WH2 to these cables. *(Step 14 and 15)*
12. Approximately 3.5 inches from the White connector carefully remove approx. $\frac{1}{4}$ inch of insulation from the White cable.
13. Strip the wire insulation off the end of the wires you cut in Step 11 to reveal at least $\frac{1}{4}$ of exposed wire. Repeat for the (4) wires remaining cables on WH2.
14. Splice the Purple cable on WH2 to the Cart end of the Green cable you cut in Step 11.
15. Splice the Green cable on WH2 to the Controller end of the Green cable you cut in Step 11.





Cricket Remote Control Installation

16. Connect the White cable from WH2 to the area where you removed the insulation from the White cable in Step 12.
17. Locate the Red and Black cables you disconnected in Step 5. Then approximately 3.5 inches from spade connector carefully remove approx. ¼ inch of insulation from both cables.
18. Splice the Black cable from WH2 onto the Black cable used in Step 17.
19. Splice the Red cables from WH1 and WH2 to the Red cable used in Step 17.
20. Disconnect the Remote Control Enable Switch. Mark on one of the Red cables so you can connect it back the same way. Then route the cables through the access hole on the back of the Controller Tray.
21. Connect the Remote Control Enable Switch making note of the cable you marked so it's connected the same way.





Cricket Remote Control Installation

22. Reconnect the Red and Black cables to the Controller.
23. Connect the Remote Control Radio to the connectors on WH1 and WH2. Place the Radio next to the Controller inside the tray.
24. Reconnect the (4) four Motor Power Supply cables to the controller.
25. Turn the Key to "OFF", set the direction switch on the dash to Forward and set the Remote Control Enable Switch to "On".
26. Press the "C" button on the Remote Control to activate the Remote Control System. You should see the battery meter light on the dash come "On".
27. Press the "B" button on the Remote Control and your cart should start to slowly move forward.
28. Replace U-Shaped brackets removed in Step 4.
29. Replace the Controller Tray Cover.

