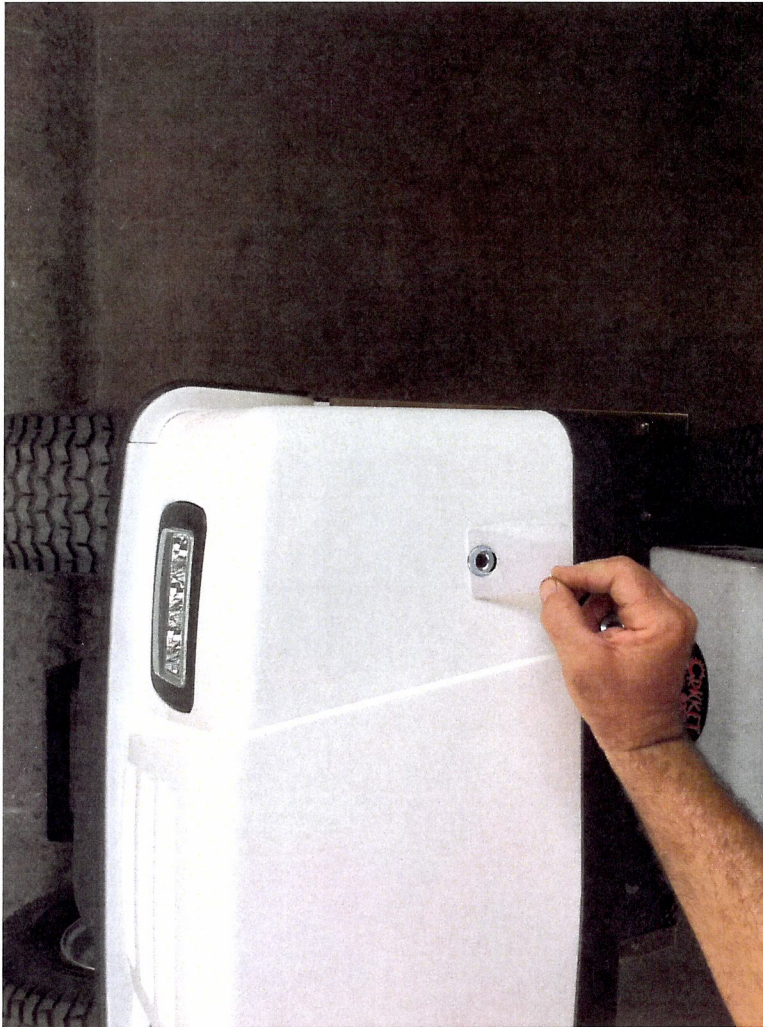
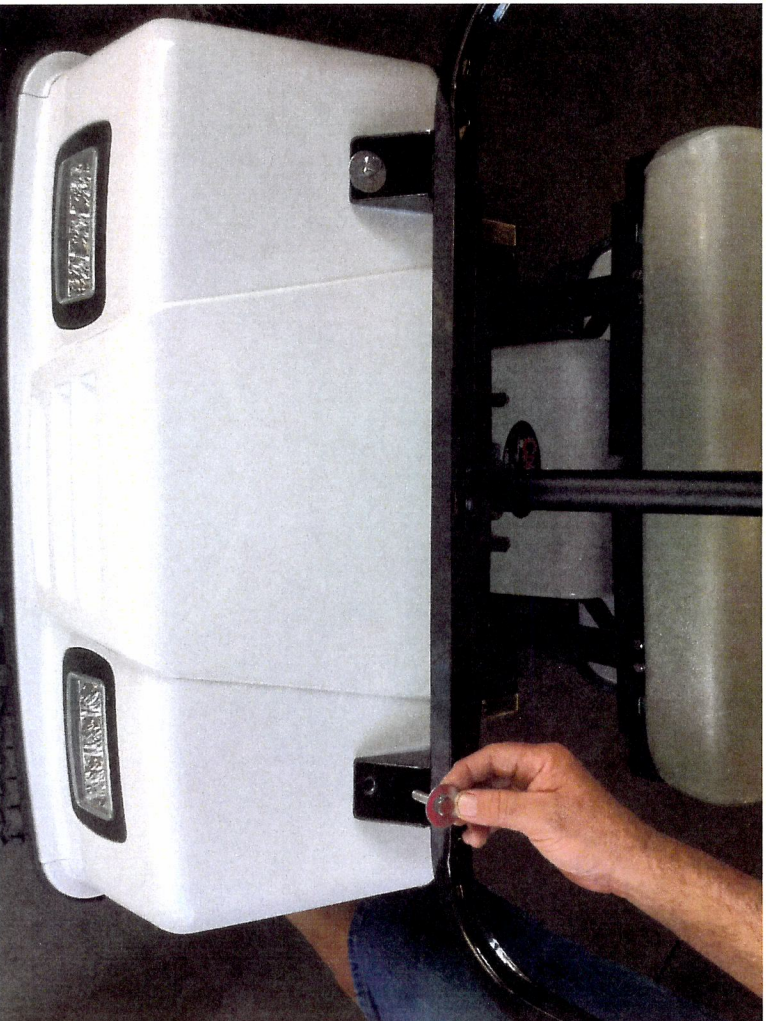


Remove black caps in front cowl  
Insert aluminum spacers into hole where caps were  
Lay plastic bushing over hole in cowl with long end to rear of Cricket







Place large washer on 1 1/2 hex head bolt , place both bolts in cowl hole with windshield u shaped bracket mounted on cowl , do not tighten yet  
Place long rear strut in each side of rear seat frame , the small tips on struts should be out side of struts , do not tighten yet !



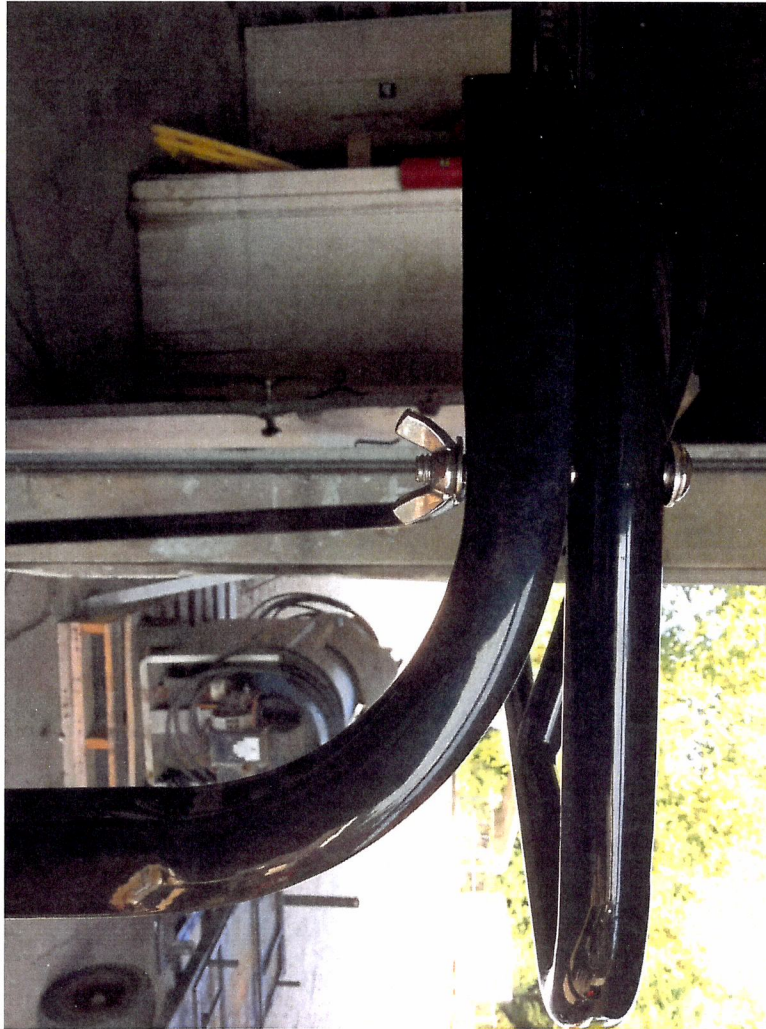




Place top frame on front windshield u shape strut and on rear struts , make sure the small tips on the bottom of top bracket go to the front of Cricket  
Insert 2 1/2 round head bolts into top frame & through front & rear struts holes there is 8 bolts , install wing nuts on the 8 bolts on bottom of struts Do not tighten yet !  
Install windshield black Long clips on windshield one on each side and one at the bottom , make sure the open side of clips go to the rear of windshield



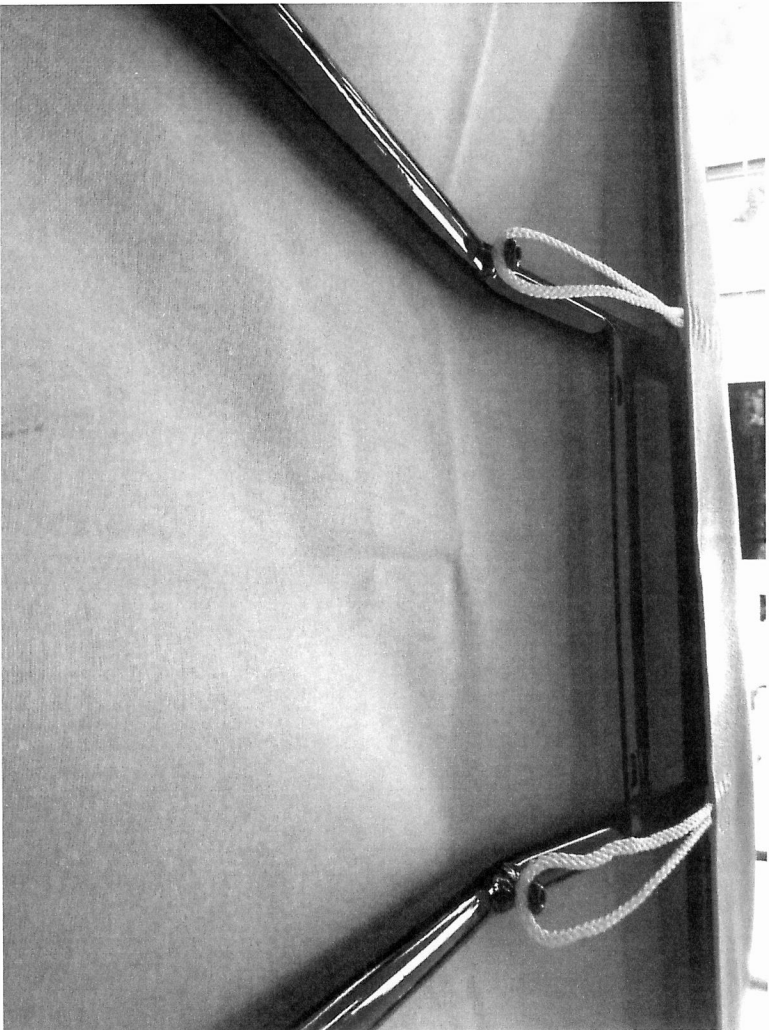






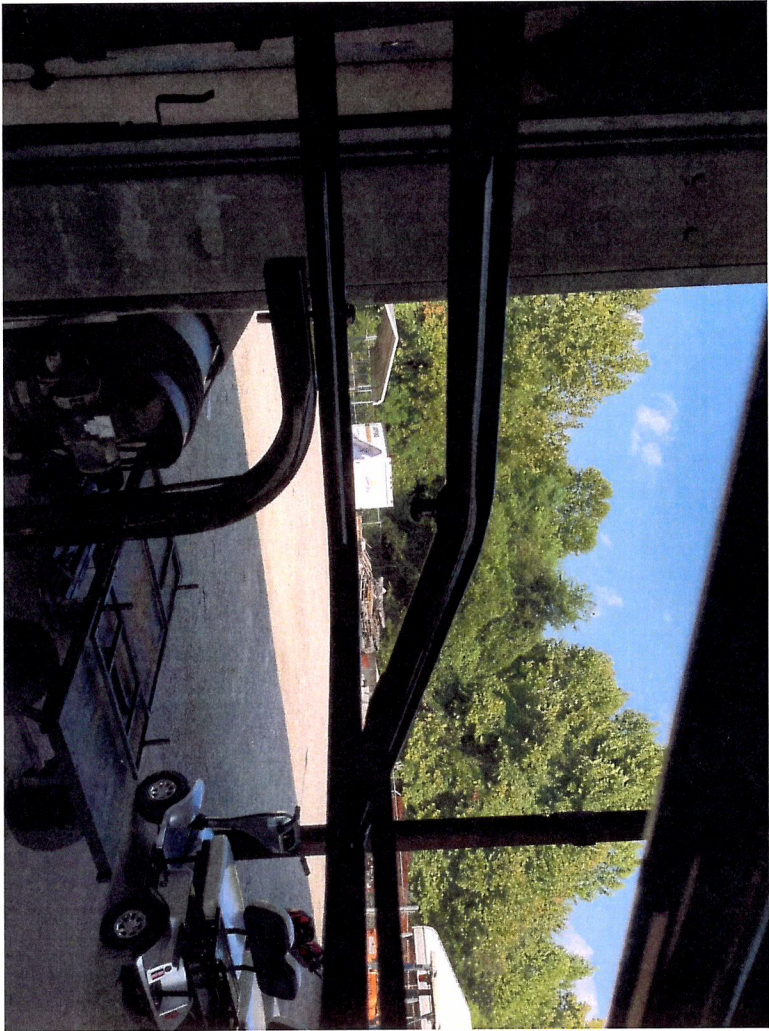
Line up windshield long clips after installed , to front u shaped windshield frame , push long windshield clips onto front frame until they snap on frame  
Make sure all parts look square and straight,  
Now tighten all nuts & bolts

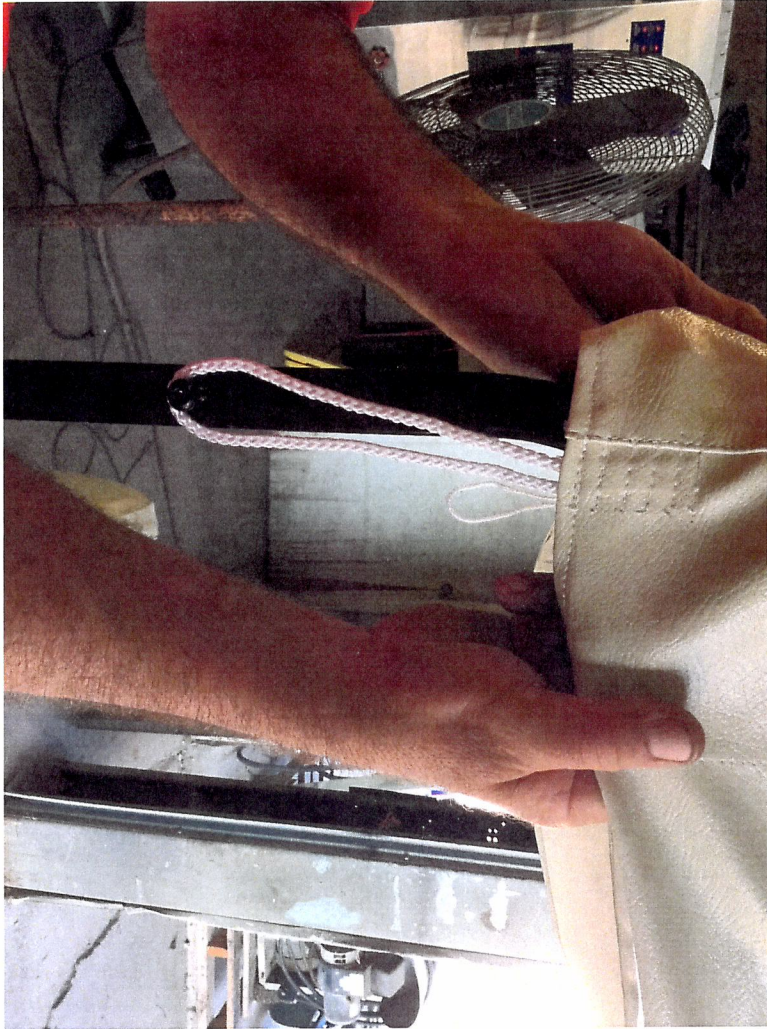




Place cover over top frame with the strings that are in the middle of cover to front , slide on top frame and hook strings to studs on top frame

Pull over all frame , place rear strings on rear studs , do not pull by strings , pull down by pulling the vinyl , Now you should be ready to go !!!!







Line up windshield long clips after installed , to front u shaped windshield frame , push long windshield clips onto front frame until they snap on frame  
Make sure all parts look square and straight,  
Now tighten all nuts & bolts